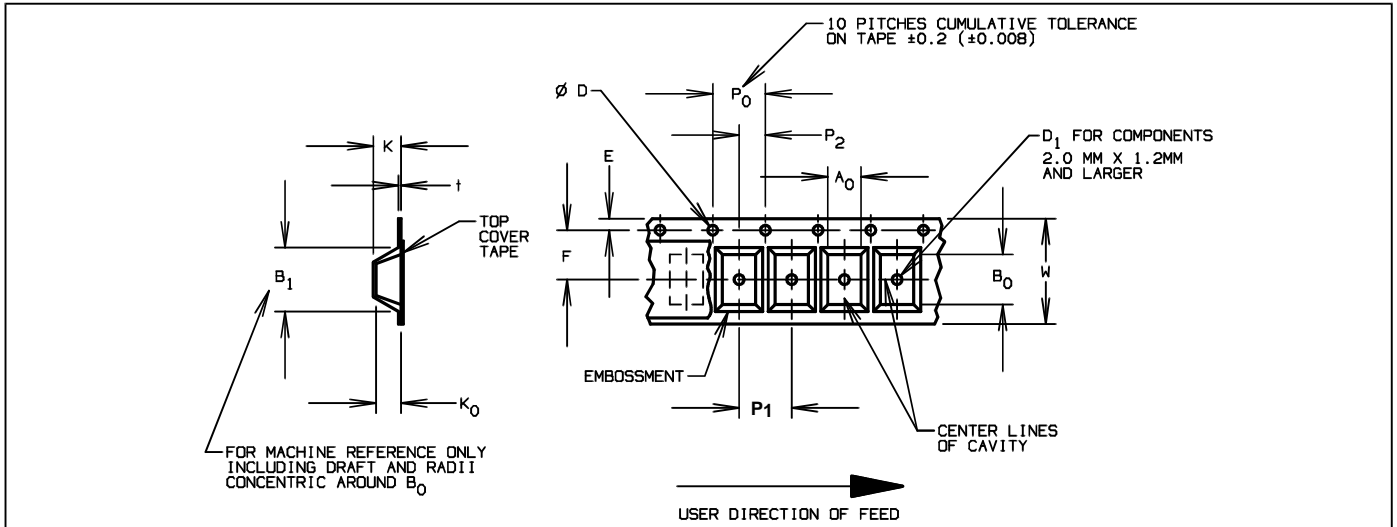


Tape & Reel Specification

Hi-Rel Surface Mount Products


Notes:

1. Optek Hi-Rel surface mount components are available packaged on Tape and Reel per EIA481. Dimensions specific to Optek packages are provided in the table below. For other dimensions refer to EIA481. A copy of the specification can be provided upon request.

Part Type	Tape (mm)						Reel	
	W	P ₁	P ₀	A ₀	B ₀	K ₀	O.D. (mm)	Max QTY/RL
3 Pin LCC	8	4	4	3.1	2.7	1.2	178 (7")	1000
							330 (13")	2500
4 Pin LCC	12	8	4	3.8	5.7	2.4	178 (7")	1000
							330 (13")	2500
6 Pin LCC	12	8	4	6.4	5.1	2.1	178 (7")	1000
							330 (13")	2500
20 Pin LCC	16	12	4	10.1	10.1	4.9	178 (7")	250
							330 (13")	1000

2. Material - PVC or Styrene. Resistivity - Conductive
3. There are no customer selectable options provided.
4. The choice of 7" or 13" reels will be based upon shipment quantity.